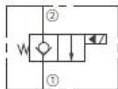


SOLENOID VALVE

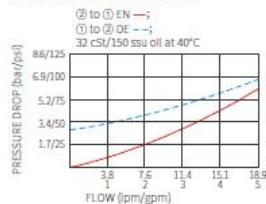
ISV08-B20
 POPPET, 2-WAY, N.C.
 (HIGH PERFORMANCE)



SYMBOL



PERFORMANCE (cartridge only)



DESCRIPTION

A solenoid-operated, 2-way, normally closed, piloted poppet-type, screw-in hydraulic cartridge valve, intended to act as a blocking or load-holding device for low flow circuits.

OPERATION

When de-energized, the ISV08-B20 acts as a check valve, allowing flow from ① to ②, while blocking flow from ② to ①.

When energized, the cartridge's poppet lifts to open the ② to ① flow path.

Operation of Manual Override Option: To override, push button in, twist counterclockwise for 2 turns, and release. To return to normal operation, push button in, twist clockwise for 2 turns, and release.

FEATURES

1. Continuous-duty rated coil.
2. Hardened seat for long life and low leakage.
3. Optional coil voltages and terminations.
4. Cartridges are voltage interchangeable.
5. Unitized, molded coil design.
6. Manual override option.
7. Optional waterproof E-Coils rated up to IP69K.
8. Industry common cavity.
9. Compact size.

RATINGS

Operating Pressure: 207 bar (3000 psi)

Proof Pressure: 310 bar (4500 psi)

Flow: See Performance Chart

Internal Leakage: 0.1 ml/min. (2 drops/minute) max. at 207 bar (3000 psi)

Temperature: -40 to 100°C

Coil Duty Rating: Continuous from 85% to 115% of nominal voltage

Minimum Pull-in Voltage: 85% of nominal at 207 bar (3000 psi)

Fluids: Mineral-based or synthetics with lubricating properties at viscosities of 7.4 to 420 cSt (50 to 2000 sus)

Installation: No restrictions

Cavity: IVC08-2; See page 297

MATERIALS

Cartridge: Weight: 0.09 kg. (0.20 lbs.); Steel with hardened work surfaces.

Zinc-plated exposed surfaces.

Seal: D type seal rings.

Standard Ported Body: Weight: 0.16 kg. (0.35 lbs.); Anodized high-strength 6061 T6 aluminum alloy, rated to 240 bar (3500 psi).

Ductile iron and steel bodies available; dimensions may differ.

Consult Inno.

Standard Coil: Weight: 0.11 kg. (0.25 lbs.); Unitized thermoplastic encapsulated, Class H high temperature magnetwire.

E-Coil: Weight: 0.41 kg. (0.9 lbs.); Perfect wound, fully encapsulated with rugged external metal shell; Rated up to IP69K with integral connectors.

Mail: salesinno@innohydra.com

<https://www.inno-valve.com/>