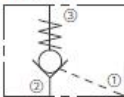


DIRECTIONAL VALVE

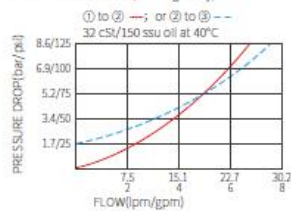
IPC08-30
CHECK VALVE
PILOT-TO-OPEN



SYMBOL



PERFORMANCE (cartridge only)



DESCRIPTION

A screw-in, cartridge-style, hydraulic check valve for use as a blocking or load-holding device.

OPERATION

The IPC08-30 allows flow from ② to ③, while normally blocking flow from ③ to ②. The flow will be allowed from ③ to ② when sufficient pressure is applied at ①. The cartridge has a 3:1 pilot ratio, meaning that at least one-third of the load pressure held at ③ is required at ① to open the valve. The check is spring-biased to assure holding in static or no-load conditions. A sealed pilot piston option is available.

FEATURES

1. Hardened seat for long life and low leakage.
2. Optional sealed piston.
3. Optional spring ranges.
4. Compact size.

RATINGS

Operating Pressure: 240 bar (3500 psi)

Flow: See Performance Chart

Internal Leakage at 240 bar (3500 psi):

- ③ to ②: 0.25 ml/min. max (2 drops/minute)
- ② to ① without sealed piston: 115 ml/min. max (7 cu. in./minute)
- ② to ① with sealed piston: Zero leakage

Pilot Ratio: 3 : 1

Check Spring Bias: 1.72 bar (25 psi), Standard

With Sealed Piston Option: 6.2 bar (90 psi) minimum

Temperature: -40 to 100°C

Fluids: Mineral-based or synthetics with lubricating properties at viscosities of 7.4 to 420 cSt (50 to 2000 ssu)

Installation: No restrictions

Cavity: IVC08-3; See page 298

MATERIAL

Cartridge: Weight: 0.08kg. (0.18 lbs.); Steel with hardened work surfaces.

Zinc-plated exposed surfaces.

Seal: D type seal ring.

Standard Ported Body: Weight: 0.27 kg. (0.60 lbs.); Anodized highstrength 6061

T6 aluminum alloy, rated to 240 bar (3500 psi).

Ductile iron and steel bodies available; dimensions may differ.

Consult Inno.

Mail: salesinno@innohydra.com

<https://www.inno-valve.com/>