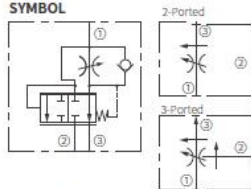


FLOW CONTROL VALVE

IFR10-39
FLOW FREGULATOR
PRESSURE-COMPENSATED

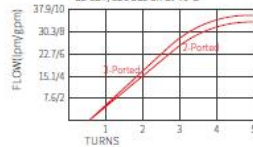


SYMBOL



PERFORMANCE (cartridge only)

Regulated Flow VS. Turns
103 bar/ 1500 psi at Port ③
2-Ported: at 123 bar/ 1800 psi Inlet pressure
3-Ported: at 38 lpm/ 10 gpm Inlet flow
32 cSt/150 sus oil at 40°C



DESCRIPTION

A screw-in, cartridge-style, adjustable orifice, pressure-compensated, manually-operated, bypass-type hydraulic flow regulating valve. It can be used as a priority-type flow regulator or a restrictive-type 2-way flow regulator when the bypass port (port ②) is blocked.

OPERATION

The IFR10-39 maintains a constant flow rate from ③ regardless of load pressure changes in the system downstream of ③, or in the bypass leg at ②. Reverse flow (③ to ①) does not bypass the control orifice. The regulated flow increases from closed to fully open, with counter-clockwise rotation of the knob.

Note: When used as a bypass flow control in applications where the priority flow port will be blocked by external valving, the bypass pressure drop will increase unless a small amount of leakage is provided for the priority port. Consult Inno.

FEATURES

1. Bypass port ② may be fully pressurized.
2. Fine low-torque adjustment.
3. Hardened steel parts for long life.
4. Quiet, modulated response.
5. Industry common cavity.

RATINGS

Operating Pressure: 240 bar (3500 psi)

Flow Rate: ③-ported regulated flow (Priority+Bypass): 0 to 38 lpm (0 to 10 gpm)

③-ported regulated flow (Bypass Blocked): 0 to 34 lpm (0 to 9 gpm)

Input Flow: (Priority+Bypass): 0 to 38 lpm (0 to 10 gpm) nominal; 0 to 57 lpm (0 to 15 gpm) max.

Internal Leakage: 33ml/min. at 207 bar (3000 psi)

Adjustment Torque Required: Required torque 1.7 Nm at 207 bar (3000 psi)

Temperature: -40 to 100°C

Fluids: Mineral-based or synthetics with lubricating properties at viscosities of 7.4 to 420 cSt (50 to 2000 ssu)

Installation: No restrictions

Cavity: IVC10-3; See page 300

MATERIALS

Cartridge: Weight: 0.30 kg. (0.68 lbs.); Steel with hardened work surfaces.

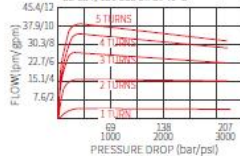
Zinc-plated exposed surfaces; Seal: D type seal rings.

Standard Ported Body: Weight: 0.36 kg. (0.80 lbs.); Anodized high-strength 6061

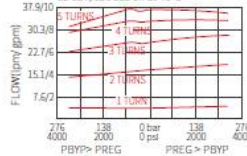
T6 aluminum alloy, rated to 240 bar (3500 psi); Ductile iron and steel bodies available; dimensions may differ; Consult Inno.

PERFORMANCE (2)

2-Ported: Regulated Flow VS. Pressure
at 240 bar/ 3500 psi Inlet
32 cSt/150 sus oil at 40°C



3-Ported: Regulated Flow VS. Load
at 38 lpm/ 10 gpm inlet
32 cSt/150 sus oil at 40°C



Mail: salesinno@innohydra.com

<https://www.inno-valve.com/>